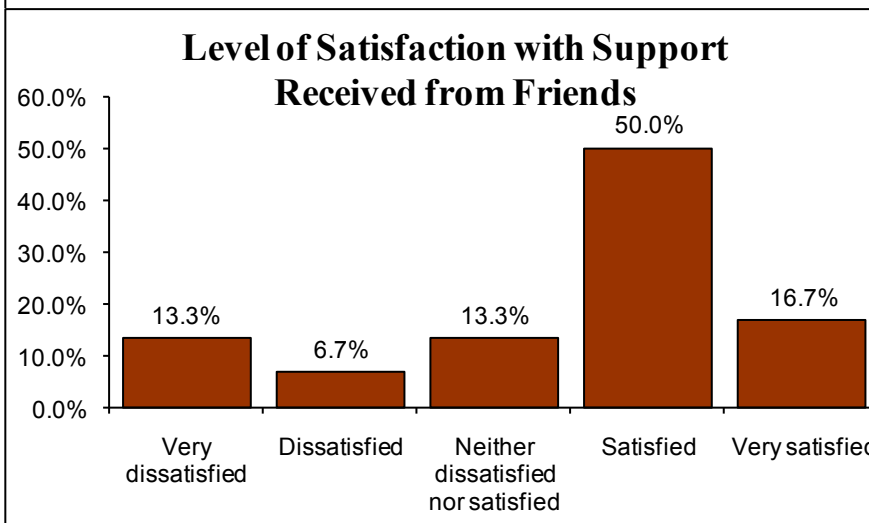
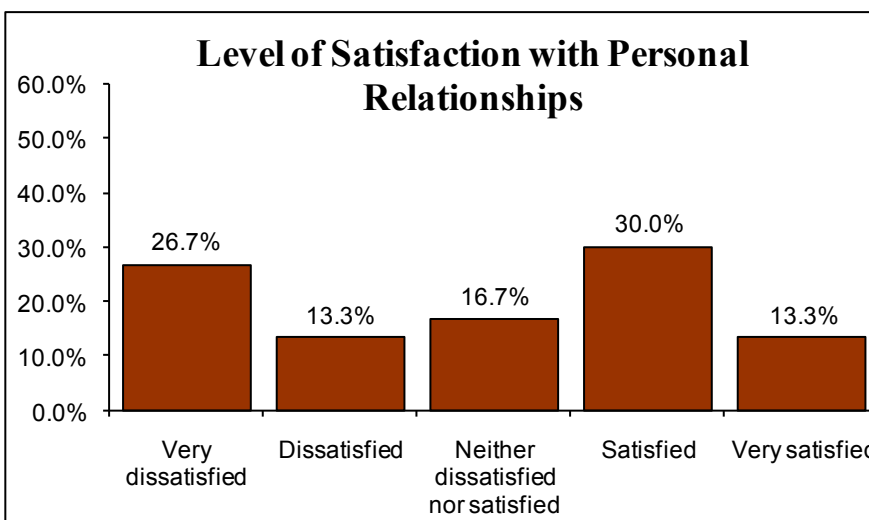
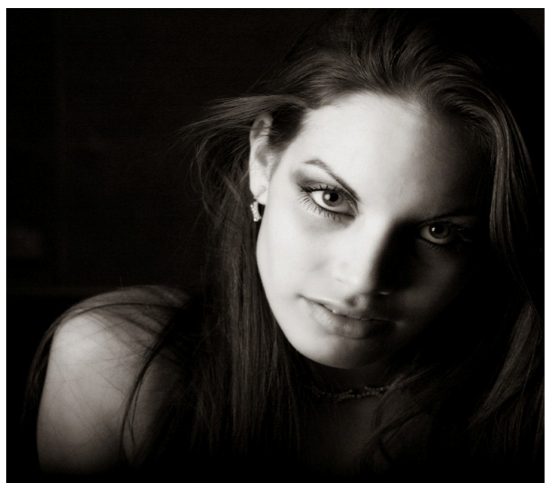


**Research Brief Series III: Social Support of LGBTQQ Individuals in AZ**

**Brief C: LGBTQQ Adult Women in Mujer Sana-Healthy Woman**

The [University of AZ-Southwest Institute for Research on Women’s \(UA-SIROW\) Mujer Sana-Healthy Woman](#) was an HIV, STD, Hepatitis and TB prevention project for women enrolled in residential substance abuse treatment and active drug using women not in treatment. LGBTQQ status was determined from self-reports of who participants had sex with during the past 30 days. Consequently, **30** participants were classified as LGBTQQ.



- 43.3% were satisfied or very satisfied with their personal relationships.
- However, 40.0% were dissatisfied or very dissatisfied with their personal relationships.
- 66.7% were satisfied or very satisfied with support from friends.
- However, 20.0% were dissatisfied or very dissatisfied with support from friends.
- 36.7% were satisfied or very satisfied with both their personal relationships and support from friends.
- 10.0%, though, were dissatisfied or very dissatisfied with both their personal relationships and support from friends.

**Extent to Which These Women were Troubled by Social Problems During the Past 30 Days**

| Type of Problem                                | Not at all | Slightly | Moderately | Considerately | Extremely |
|--|------------|----------|------------|---------------|-----------|
| Problems with family members                   | 3.3%       | 13.3%    | 30.0%      | 13.3%         | 36.7%     |
| Problems with people other than family members | 13.3%      | 23.3%    | 33.3%      | 10.0%         | 20.0%     |

- The majority (93.3%) had problems with family members.
- The majority (86.6%) had problems with people other than family members.
- The majority (80.0%) had problems with both family and other people.

Korchmaros, J. D., & Stevens, S. (2010, September). Social support of LGBTQQ individuals in AZ: LGBTQQ adult women in Mujer Sana-Healthy Woman (Research Brief No. III.C). Tucson, AZ: University of Arizona, [Southwest Institute for Research on Women](#).  
Data from this project is not representative of all LGBTQQ adult women in AZ.

For more information about [Mujer Sana-Healthy Woman \(HIV, STD, TB, and Hepatitis B + C Drug Treatment Enhancement for Women\)](#), please see <http://sirow.arizona.edu/work/projects/view/?id=13> or contact Sally Stevens, PhD at [sstevens@email.arizona.edu](mailto:sstevens@email.arizona.edu). [Mujer Sana-Healthy Woman](#) was supported by grant H79 T114452 from Substance Abuse and Mental Health Service Administration–CSAT (2002-2008).