

# Treatment and Law Enforcement: A collaborative approach to combat the opioid epidemic



COLLEGE OF SOCIAL & BEHAVIORAL SCIENCES  
Southwest Institute  
for Research on Women

# Presenters

**Lt. Jamie Brady**

Tucson Police Department  
Field Services Bureau



**Larry Onate, MD**

Medical Director CODAC, MAT 24/7  
CEO ETANO Center, MAT



**Josephine D. Korchmaros, PhD**

Director

University of Arizona

Southwest Institute for Research on Women



# Acknowledgement & Disclaimer

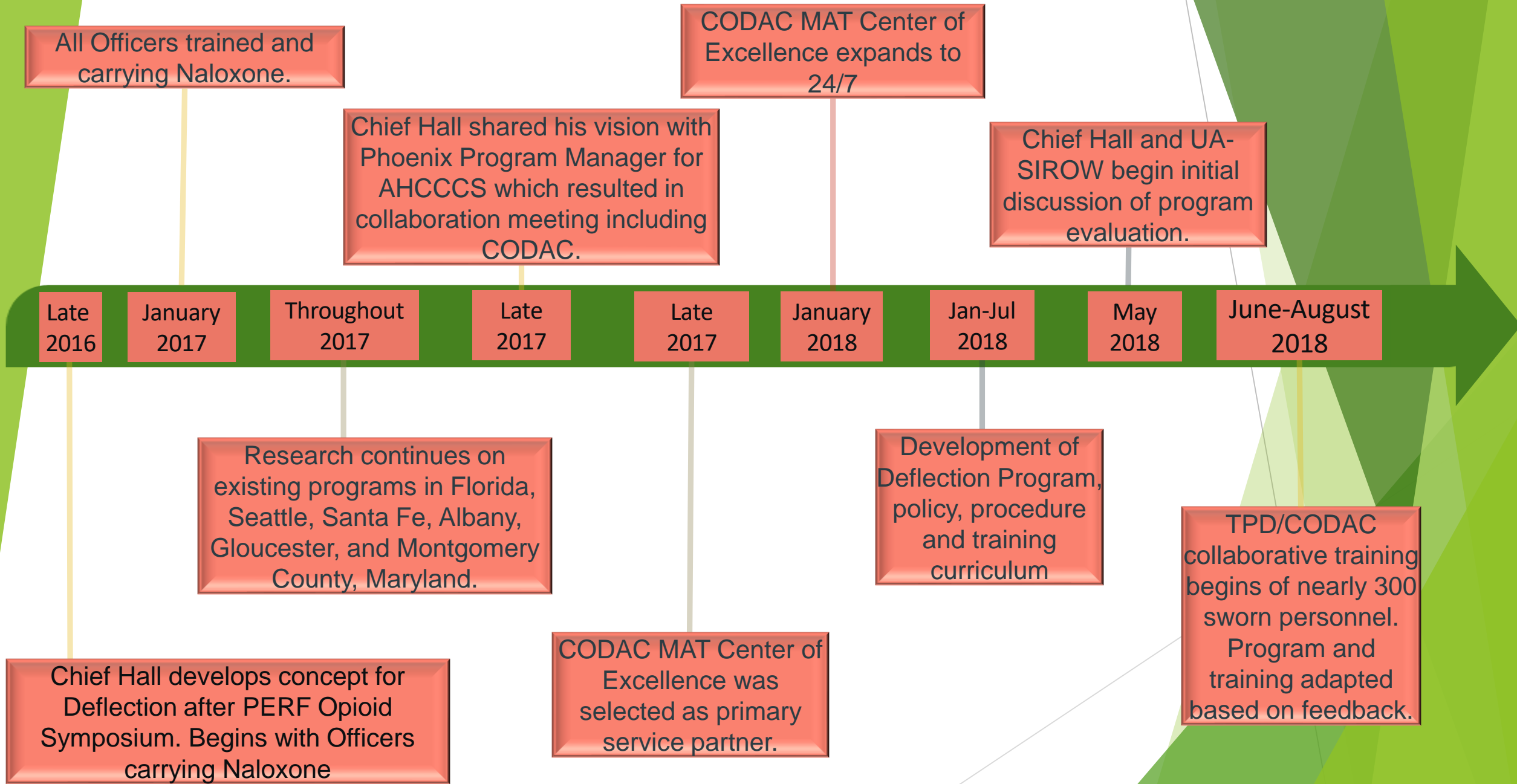
Funding for this conference was made possible in part by grant number H79TI081559 from SAMHSA. The views expressed in written conference materials or publication and by speakers and moderators do not necessarily reflect the views, opinions, or policies of CMHS, SAMHSA, or HHS; nor does mention of trade names, commercial practices, or organizations imply endorsement by the U.S. Government.



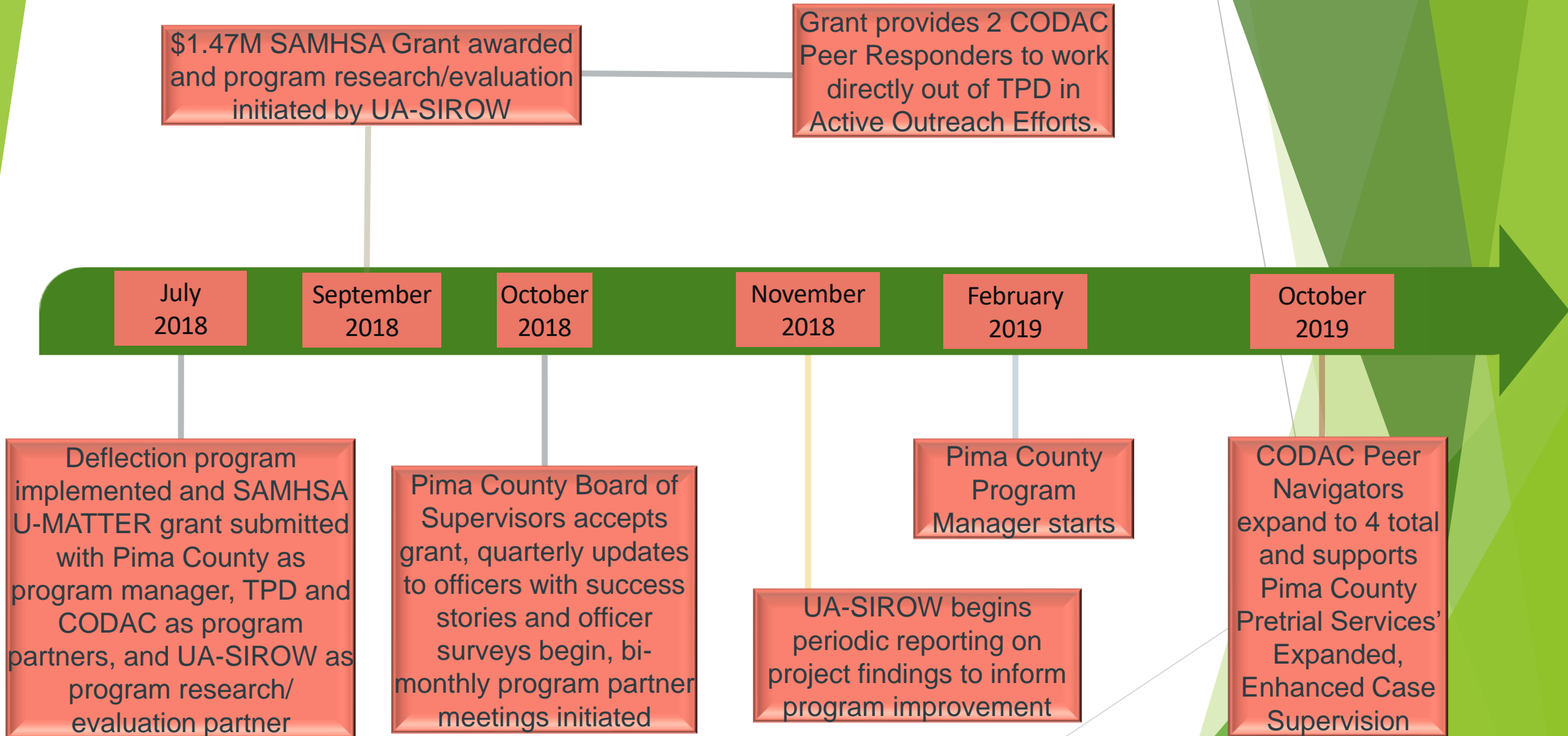
# Project Timeline

**Lt. Jamie Brady**  
Tucson Police Department  
Field Services Bureau

# TPD~CODAC~SIROW~Pima County Deflection Collaboration



# TPD~CODAC~SIROW~Pima County Deflection Collaboration



# **MAT Services & Community Engagement**

**Larry Onate, MD**  
Medical Director CODAC, MAT 24/7  
CEO ETANO Center, MAT



# Outline

- ▶ OUD as a Biological Brain Disease
- ▶ ACE and Stages of Change
- ▶ MAT and OTP Treatment
- ▶ MAT and OTP following standards for evidence based treatment



# CODAC HEALTH, RECOVERY & WELLNESS

- ▶ Respond to the Opioid Crisis in Southern Arizona

CODAC's MAT center has been named as Southern Arizona's First Center of Excellence by AHCCCS and Cenpatico.

# CODAC's 24/7 MAT Center of Excellence

- ▶ SERVICES AVAILABLE ON-SITE:
- ▶ Assessment and evaluation
- ▶ Intensive Outpatient Programs
- ▶ Standard outpatient programming
- ▶ Individual and family therapy
- ▶ Employment support services
- ▶ Peer run services
- ▶ Psychiatric services
- ▶ Primary medical care
- ▶ OB-GYN

# CODAC's 24/7 MAT Center of Excellence

- ▶ WE'RE A COMMUNITY RESOURCE
- ▶ Hub for community-based treatment efforts to address opioid use disorders.
- ▶ Available 24/7 for consultation related to potential/ appropriate referrals.
- ▶ Drop-in for first responders and law enforcement.
- ▶ Safe haven for community members with opioid use disorders who are ready to engage in treatment.
- ▶ Intent: Divert from emergency room and jail if treatment is a viable alternative.

# OPIOID USE DISORDER

Risk of dying 6-20 times higher than general population  
(Darke et al.; 2011).

Overdose: Most common cause of death  
(Deganhart et al., 2014).

# ADDICTION IS A BRAIN DISEASE



- ▶ Addiction is a primary, chronic disease of brain reward, motivation, memory and related circuitry.

# BRAIN REWARD SYSTEM

## PFC-

ROLE:

PLANNING &

MOTIVATING

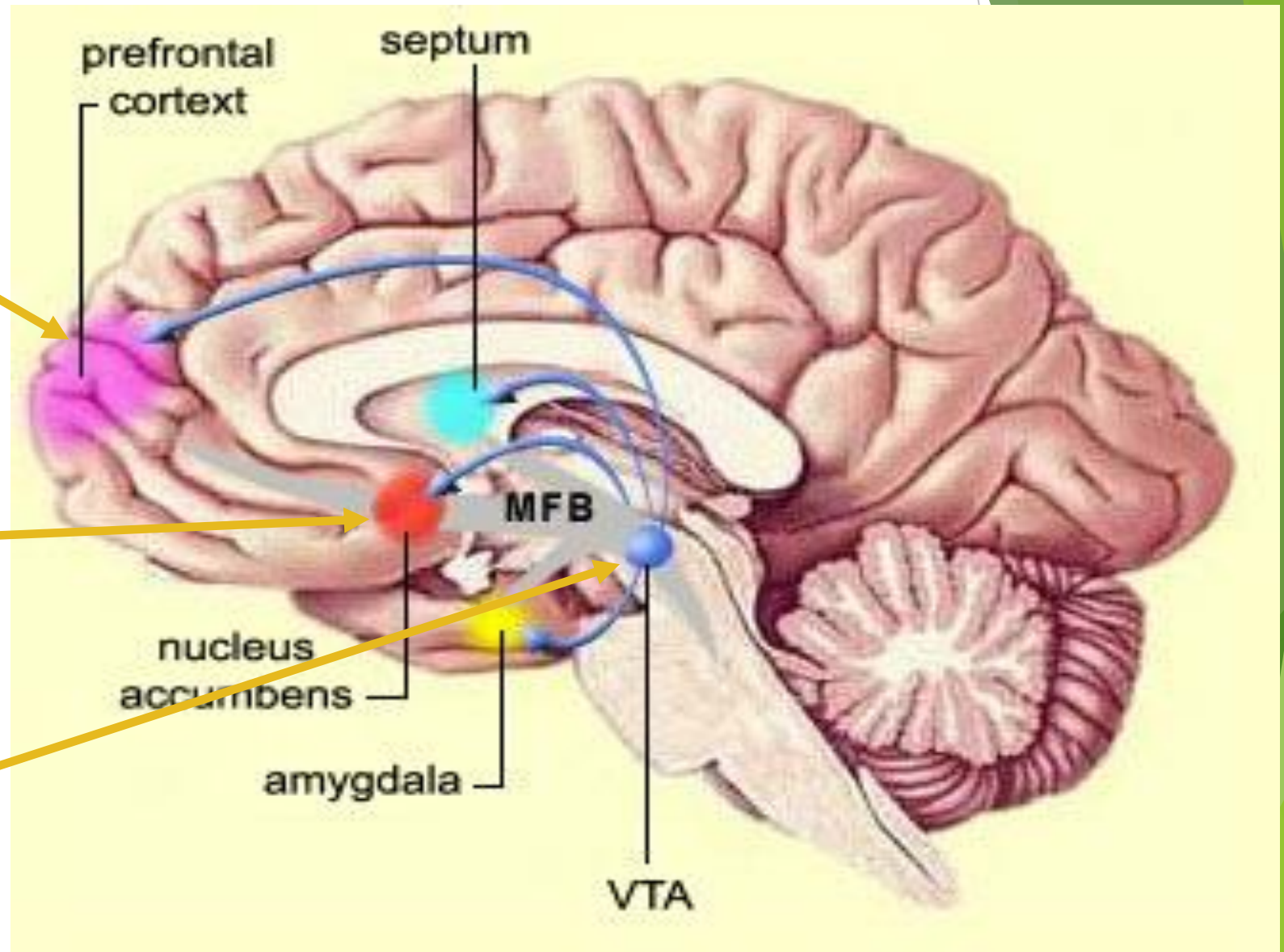
MODULATED BY DA

## Nucleus Accumbens-

ROLE: REWARD, PLEASURE, ADDICTION

## VTA-

SYNTHESIZES DA



# DRUGS VS NATURAL REINFORCERS

- ▶ DOPAMINE Bursts

-Satiating occurs with food, water and sex, but NOT drugs. Drugs produce effects on Dopamine very rapidly → DA Bursts

- ▶ Unexpected Rewards

-Brain responds to Unexpected Rewards → Adapt to Environment

- ▶ Learning Associations

-The more often drugs are used the more reinforcing they become Eventually drugs can control many behaviors → Learning Associations

# OTP Community Relations

- ▶ Engaging Community Partners
- ▶ Monthly collaborators meetings
- ▶ On-site treatment groups
- ▶ Diversity of services offered
- ▶ Offering touchdown space for peer run organizations
- ▶ Training 100% of “on-the-street” TPD officers



# Adverse childhood events Study

- ▶ Adverse childhood experiences (ACEs) are stressful or traumatic events, including abuse and neglect. They may also include household dysfunction such as witnessing domestic violence or growing up with family members who have substance use disorders. ACEs are strongly related to the development and prevalence of a wide range of health problems throughout a person's lifespan, including those associated with substance misuse.

# ACES Include

- ▶ Physical abuse
- ▶ Sexual abuse
- ▶ Emotional abuse
- ▶ Physical neglect
- ▶ Emotional neglect
- ▶ Intimate partner violence
- ▶ Mother treated violently
- ▶ Substance misuse within household
- ▶ Household mental illness
- ▶ Parental separation or divorce
- ▶ Incarcerated household member

# Medication Assisted Treatment

- ▶ Approved medications for treatment of opiate dependency:
  - ▶ • Buprenorphine and Buprenorphine/Naloxone
  - ▶ • Methadone
  - ▶ • Naltrexone oral and Naltrexone injectable
- ▶ MAT has proven to be very effective as part of a holistic, evidence-based treatment program that includes behavioral, cognitive and other recovery-oriented interventions, treatment agreements, urine toxicology screens and checking of PDMP



# Harvard Review Data

- ▶ The evidence strongly supports use of agonist therapies to reduce opioid use and retain patients in treatment, with **MMT as the gold standard of care.**
- ▶ Buprenorphine/Naloxone demonstrates significant efficacy and favorable safety and tolerability in multiple populations, including youth and prescription opioid-dependent individuals. Buprenorphine shows efficacy in pregnant women.
- ▶ Evidence for antagonist thx is weak. Naltrexone shows higher mortality and poor adherence. Long acting Naltrexone shows better results with regards to misuse, diversion and risk of overdose.
- ▶ H. Connery; Harvard Review Psychiatry March/April 2015

# Safe HEALING ENVIRONMENT



# Member Success

- ▶ “I am not on the streets anymore. I have my own apartment and I am not using. I have learned a lot about myself and the reasons why I used for so many years.”

# Program Evaluation

**Josephine D. Korchmaros, PhD**  
University of Arizona

Southwest Institute for Research on Women



COLLEGE OF SOCIAL & BEHAVIORAL SCIENCES

Southwest Institute  
for Research on Women

# Goals:

- ▶ Ongoing monitoring and evaluation to inform project improvement
  - ▶ Implementation evaluation
- ▶ Examination of project impact and effectiveness
  - ▶ Examination of project outputs
  - ▶ Outcome evaluation



# Capacity & Infrastructure:

- ▶ Project team established and meeting regularly.
- ▶ Developed contracts.
- ▶ Procedures for collaborating, communicating, and sharing data established.
- ▶ Developed evaluation protocols and procedures.
- ▶ Personnel hired.

# Program Implementation:

- ▶ Officers are identifying subjects who are willing to consider treatment and have been successful at encouraging them to get connected with treatment providers.
  - ▶ 54% of subjects offered deflection definitely wanted to do it.
  - ▶ Of the other 46%, officers persuaded 36% to be immediately transported to a provider.
  - ▶ 70% of subjects offered deflection agreed to be immediately transported to a provider.

# Program Implementation:

- ▶ Officers are considering deflection program eligibility criteria as well as subject willingness for tx when deciding whether to offer deflection.
  - ▶ 82% of deflected subjects self-identified as needing tx
  - ▶ 31% of those not deflected reported on their lack of need or willingness for tx.
  - ▶ 49% of those not deflected did not meet the eligibility criteria.

# Outputs/Outcomes - July 1, 2019 to Feb. 22, 2019:

- ▶ 187 unduplicated individuals deflected to date.
- ▶ 6 connected to tx via outreach efforts.
- ▶ 59 individuals received individualized active outreach.
- ▶ 32 stakeholders and potential project partners informed about the project through outreach efforts.

# Pima County U-MATTER Q & A



COLLEGE OF SOCIAL & BEHAVIORAL SCIENCES  
Southwest Institute  
for Research on Women

# Contact

**Lt. Jamie Brady**  
Tucson Police Department

[Jamie.Brady@tucsonaz.gov](mailto:Jamie.Brady@tucsonaz.gov)

**Larry Onate, MD**  
CODAC

[lonate@codac.org](mailto:lonate@codac.org)

**Josephine D. Korchmaros, PhD**  
University of Arizona/SIROW

[jkorch@email.arizona.edu](mailto:jkorch@email.arizona.edu)

**Mayra Ramos**  
U-MATTER Program Manager

[Mayra.Ramos@pima.gov](mailto:Mayra.Ramos@pima.gov)